

**Cells in nervous tissue**

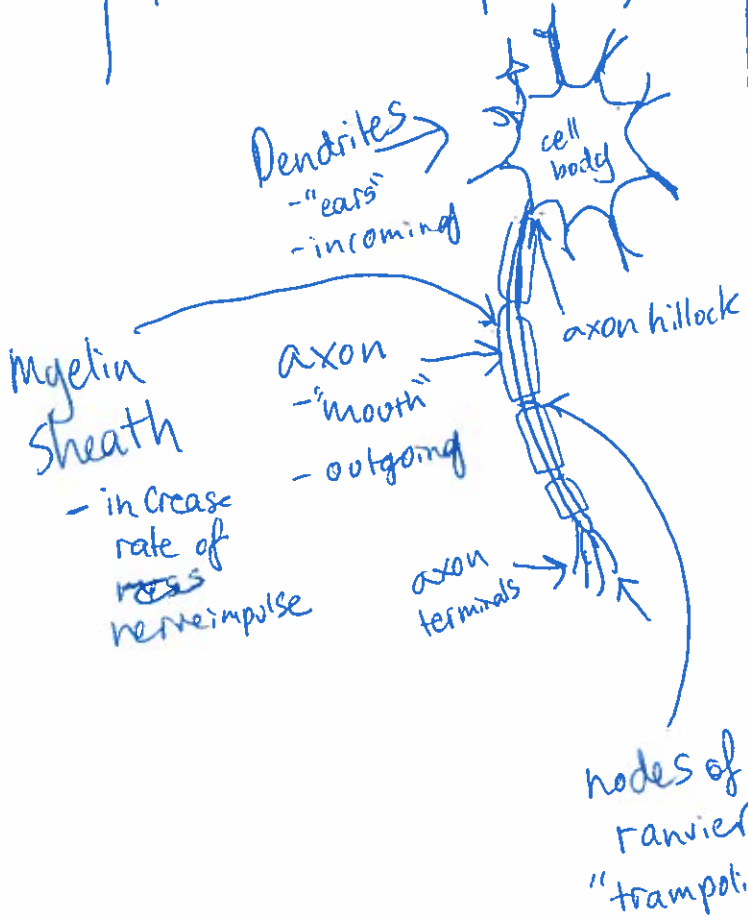
**Neurons**

function - transmit message

cell body

- nucleus
- metabolic center
- organelles (no centrioles)

Processes (up to 7ft)



**Supporting cells neuroglia**

**PNS glia**

- ↳ Schwann cells
- oligo, but in the PNS
- create myelin sheath

**CNS glia**

- ↳ Astrocytes 50% of nervous tissue
  - star shaped
  - anchor neurons to capillaries
  - barrier/protection for neurons

- ↳ Microglia
  - spiderlike ~~custodian~~ custodian
  - phagocytes - cleans up
  - monitors health

- ↳ Ependymal
  - lining of CNS cavities
  - cilia - circulates cerebrospinal fluid

- ↳ Oligodendrocytes
  - wrap around neurons
  - myelin sheath